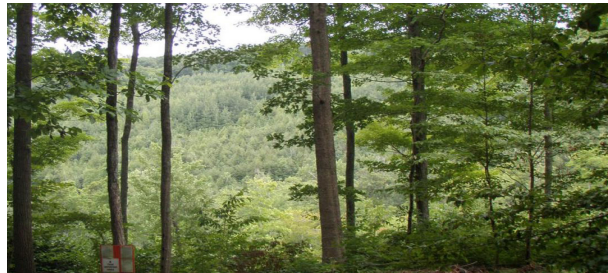


# FOREST MANAGEMENT INCENTIVE (FMI)

## Conservation Reserve Program



### Overview

USDA Farm Service Agency's (FSA) Conservation Reserve Program (CRP) is a voluntary program that contracts with agricultural producers so that environmentally sensitive agricultural land is not farmed or ranched, but instead devoted to conservation benefits. CRP participants establish long-term, resource-conserving plant species, such as approved grasses or trees (known as "covers") to control soil erosion, improve water quality, and enhance wildlife habitat. In return, FSA provides participants with rental payments and cost-share assistance.

The Inflation Reduction Act of 2022 and Further Continuing Appropriations and Other Extensions Act, 2024 extended the authority and provided funding for of the Forestry Management Incentives Program (FMI) through September 30, 2024. On Nov. 16, 2023, President Biden signed into law, H.R. 6363, the Further Continuing Appropriations and Other Extensions Act, 2024, which extended the 2018 Farm Bill. The Inflation Reduction Act of 2022 (Pub. L. 117-169) and the Further Continuing Appropriations and Other Extensions Act, 2024 (Pub. L. 118-22), extended the authority and provided funding for the Forest Management Incentive (FMI).

### CRP FMI Signup

CRP FMI signup began on January 12, 2024, and is ongoing. Signup will continue for as long as CRP authority and CRP FMI funds are available.

### Who is Eligible?

CRP FMI is limited to those farmers, ranchers, and forest landowners currently participating in CRP who have established conservation covers comprised of trees.

### Eligible Land

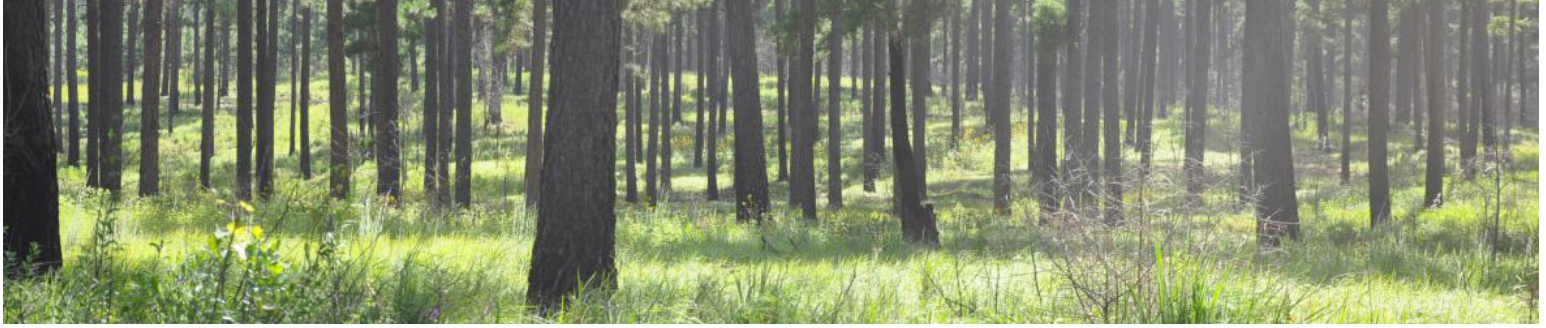
All land currently enrolled in the following conservation practices is eligible for CRP FMI:

- CP3 – Tree Planting
- CP3A – Hardwood Tree Planting
- CP4D – Permanent Wildlife Habitat
- CP11 – Vegetative Cover Trees Already Established
- CP22 – Riparian Buffer
- CP22B – Denitrifying Bioreactor on Riparian Buffer
- CP22S – Saturated Riparian Buffer
- CP31 – Bottomland Timber Establishment on Wetlands
- CP36 – Longleaf Pine Establishment
- CP38A-22 – SAFE Riparian Buffer
- CP38C-3 – SAFE Tree Planting
- CP38C-3A – SAFE Hardwood Tree Planting
- CP38C-11 – SAFE Vegetative Cover Trees Already Established
- CP38C-31 – SAFE Bottomland Timber Establishment on Wetlands
- CP38D-36 – SAFE Longleaf Pine Establishment
- CP38E-4D – SAFE Permanent Wildlife Habitat

### Eligible Technical Practices

The following technical practices are eligible for CRP FMI:

- 314 – Brush Management
- 315 – Herbaceous Weed Control
- 327 – Conservation Cover
- 338 – Prescribed Burning
- 394 – Firebreak
- 645 – Upland Wildlife Habitat
- 647 – Early Successional Habitat
- 660 – Tree/Shrub Pruning
- 666 – Forest Stand Improvement.



## CRP FMI Payments

CRP FMI is a payment to eligible CRP participants who have properly completed authorized forest management practice activities, to improve condition of resources, promote forest management, or enhance wildlife habitat.

CRP FMI payments are equal to the lesser of the CRP participant's actual cost to implement the practice or 85% of the NRCS National Payment Scenario rate for the applicable NRCS technical practice.

A CRP participant may be eligible for more than one CRP FMI payment if multiple approved forest management activities are performed according to the conservation plan.

Approved forest management activities must be completed and reported by no later than the expiration date of the agreement, for the CRP participant to receive CRP FMI payment for such activity.

CRP FMI payment is conditional upon completion, and certification on the FSA-848B agreement, of approved forest management activities as provided in the conservation plan.

Total CRP FMI payment is limited to \$200,000 per person or legal entity.

## More Information

CRP is authorized by the Food Security Act of 1985 and was reauthorized through September 30, 2024, by Further Continuing Appropriations and Other Extensions Act, 2024 (Pub. L. 118-22). The program is also governed by regulations published in 7 CFR, part 1410. The program is implemented by FSA on behalf of USDA's Commodity Credit Corporation.

This fact sheet is for informational purposes only; other restrictions may apply.

For more information, visit [fsa.usda.gov](https://fsa.usda.gov) or contact your local FSA office. To find your local FSA office, visit [farmers.gov/service-locator](https://farmers.gov/service-locator).

